

PERFORMANCE COMPARISON OF CBO AND ECBO FOR LOCATION FINDING PROBLEMS

A. Kaveh^{1*,†} and M. Ghobadi²

*Centre of Excellence for Fundamental Studies in Structural Engineering, Iran University of
Science and Technology, Narmak, Tehran 16, Iran*

ABSTRACT

The p-median problem is one of the discrete optimization problem in location theory which aims to satisfy total demand with minimum cost. A high-level algorithmic approach can be specialized to solve optimization problem. In recent years, meta-heuristic methods have been applied to support the solution of Combinatorial Optimization Problems (COP). Collision Bodies Optimization algorithm (CBO) and Enhanced Colliding Bodies Optimization (ECBO) are two recently developed continuous optimization algorithms which have been applied to some structural optimization problems. The main goal of this paper is to provide a useful comparison between capabilities of these two algorithms in solving p-median problems. Comparison of the obtained results shows the validity and robustness of these two new meta-heuristic algorithms for p-median problem.

Keywords: p median problem, CBO, ECBO.

Received: 21 November 2015; Accepted: 12 January 2016

1. INTRODUCTION

Most of the public and private companies have the problem of finding appropriate locations for their facilities. Government agencies need to determine locations of offices and other public services such as schools, hospitals, fire stations, ambulance bases, military bases, radar installations, waste disposal facilities and so on. Industrial companies must locate the fabrication and assembly plants as well as warehouses. In these cases, the success or failure of facilities depends in part on the locations chosen for these facilities [1]. Such problems are known as location-allocation problems.

Most of the studies on location finding problems are classified into four categories:

*Corresponding author: Centre of Excellence for Fundamental Studies in Structural Engineering, Iran University of Science and Technology, Narmak, Tehran 16, Iran

†E-mail address: alikaveh@iust.ac.ir (A. Kaveh)

1. Facility location problems 2. p-median problems 3. p-center problems, and 4. covering problems [2].

In this paper a comparative study is performed for two meta-heuristics consisting of CBO and ECBO algorithms for solving p-median problem.

2. THE P-MEDIAN PROBLEM

The p-median problem is one of a largest class of location problems in both capacitated and incapacitated conditions. The aim of p-median problem is to locate p facilities among n demand points and allocates the demand points to the facilities. The objective is to minimize the total demand-weighted distance between the demand points and the facilities. In the early 20th century, Alfred Weber presented the same problem with the addition of weights on each of the three points to simulate customer demand. The following formulation of the p-median problem is due to ReVelle and Swain [3].

$$\begin{aligned}
 F &= \min \sum_{i=1}^n \sum_{j=1}^n w_i d_{ij} x_{ij} \\
 s.t. & \sum_{j=1}^n x_{ij} = 1 \quad \forall_i \\
 & x_{ij} \leq y_j \quad \forall_{i,j} \\
 & \sum_{j=1}^n y_j = p
 \end{aligned}$$

where

n = total number of demand points,

$x_{ij} = \begin{cases} 1 & \text{if a facility is located at point } i \\ 0 & \text{otherwise} \end{cases}$

$y_j = \begin{cases} 1 & \text{if a facility is located at point } j \\ 0 & \text{otherwise} \end{cases}$

w_i = demand at point i

d_{ij} = travel distance between points i and j

p = number of facilities to be located

Hakimi [4] developed a method for finding medians on a network or graph and showed that the absolute median of a graph G is always located at a vertex of a graph. Thus, to find the optimum location for a switching center in a communication network, one must only search the vertices of the graph of a network and he proved that the p-median problem is an NP-hard problem [5].

Mathematical and exact methods were the earliest techniques proposed for solving allocation problems. However, as the problem size increases, the computational time of exact methods increases exponentially. In contrast to exact methods, heuristic algorithms generally have acceptable time and memory requirements, but do not guarantee optimal solution [6]. Over the past three decades, there has been a considerable increase in the amount of solution methods. Meta-heuristics provide a general framework to build heuristics for combinatorial and global optimization problems. Meta-heuristics have many distinctive features that make them as suitable techniques, especially when these are combined with other optimization methods [7].

These have been the subject of intensive research since Kirkpatrick, Gellatt and Vecchi [8] proposed Simulated Annealing (SA) as a general scheme for building heuristics, capable of escaping the local optimums. In 1996 the basic SA heuristic for p-median problem (PMP) has been proposed by Murray and Church. After that several Tabu Search and Genetic search methods have been proposed for solving PMP [9, 10, 11].

In 1992, Dorigo developed the ant colony optimization (ACO), Levanova and Loresh [12] applied the hybrid of ACO and SA. In 2000, Glover applied the Scatter search for PMP which this algorithm was proposed by himself in 1977. Charged System Search (CSS) was used by Kaveh and Sharafi in 2008 [13].

Kaveh and Rahimi Bondarabady [14], and Kaveh and Shojaee [15] applied the GA and Ant colony, and Kaveh and Mahdavi [16] used CBO for PMP to decompose the finite element models. Kaveh and Ghobadi applied PMP to blood banking supply chain allocation problem [17].

3. OPTIMIZATION ALGORITHM

Evolutionary computation uses iterative process, such as growth or development in a population. This population is then selected in a guided random search using parallel processing to achieve the desired end. A local search procedure looks for the best solution near another solution by repeatedly making small changes to the current solution. This procedure is continued until no further solution can be found. The convergence properties of meta-heuristics are closely related to the random sequence applied on their operators during a run. In particular, when starting some optimizations with different random numbers, experience shows that the results may be very close but not equal, and require also different numbers of generations to reach the same optimal value [7].

A meta-heuristic can be successful on a given optimization problem if a balance between the exploration (diversification) and the exploitation (intensification) can be achieved. Exploitation is needed to identify parts of the search space with high quality solutions. Exploitation is important to intensify the search in some promising areas of the accumulated search experience. The main differences between the existing meta-heuristics concern the particular way in which they try to achieve this balance [18]. Also defining a neighborhood structure is the most important aspect of algorithms. By using an efficient neighborhood structure, a problem can be solved with higher accuracy in less computational time.

CBO and ECBO are two recently developed meta-heuristic algorithms developed by Kaveh & Mahdavi [19] and Kaveh & Ilchi Ghazaan [20], respectively.

3.1 CBO algorithm

The basic idea of the theory of colliding bodies optimization (CBO) is that the total momentum before the collision to be the same as the total momentum after the collision [19]. CBO is a simple algorithm and it depends on no internal parameter. In this algorithm, each body is a candidate solution to the problem which is characterized by a mass and velocity. In the initialization phase of the CBO, the positions and velocities of all individuals are randomly initialized (Eq. (1) & Eq. (2)). In the second step, objective function is evaluated and masses are defined (Eq. (3)). At each iteration, a particle CB_i adjusts its position X_i and velocity V_i according to the previous position and the velocity after the collision (Eq. (4) & Eq. (6)).

The optimization is repeated until termination criteria, specified as the maximum number of iterations, is satisfied.

$$x_i^0 = x_{\min} + rand(x_{\max} - x_{\min}), \quad i = 1, 2, \dots, n, \quad (1)$$

$$v_i = x_{i-\frac{n}{2}} - x_i, \quad i = \frac{n}{2} + 1, \dots, n \quad (2)$$

$$m_k = \frac{1}{fit(k)}, \quad k = 1, 2, \dots, n \quad (3)$$

$$v_i' = \frac{(m_i - \varepsilon m_{i-\frac{n}{2}})v_i}{m_i + m_{i-\frac{n}{2}}}, \quad i = \frac{n}{2} + 1, \dots, n \quad (4)$$

$$\varepsilon = 1 - \frac{iter}{iter_{\max}} \quad (5)$$

$$x_i^{new} = x_{i-\frac{n}{2}} + rand \circ v_i', \quad i = \frac{n}{2} + 1, \dots, n \quad (6)$$

3.2. ECBO algorithm

In order to improve the CBO to get faster and more reliable solutions, Enhanced Colliding Bodies Optimization (ECBO) was developed by Kaveh and Ilchi Ghazaan [20]. ECBO uses memory to save a number of historically best CBs and also utilizes a mechanism to escape from local optima. The solution vectors saved in CM are added to the population, and the same numbers of current worst CBs are deleted. Then the values of X_i and V_i are evaluated before and after the collision. Finally, CBs are sorted according to their masses in a decreasing order. In ECBO, a parameter like *Pro* within (0, 1) is introduced which specifies whether a component of each CB must be changed or not. For each colliding body *Pro* is compared with *rand i* ($i = 1, 2, \dots, n$) which is a random number uniformly distributed within (0, 1). If *rand i* < *Pro*, one dimension of the *i*th CB is selected randomly and its value is regenerated and the termination condition is checked [21]. CBO and ECBO and some recently developed metaheuristic algorithms can be found in Kaveh [22]. Pseudo code of the ECBO is illustrated in Fig. 1.

Pseudo code of Enhanced Colliding Bodies Optimization

```

Initial location is created randomly
The value of objective function and mass are evaluated
While stop criteria is not attained (like max iteration)
    for each CBs
        Calculate CBs velocity before collision according equation (2)
        Calculate CBs velocity after collision according equation (4)
        Update CBs position according equation (6)
    If rand i < Pro
        One dimension of the ith CB is selected randomly and regenerate
    End if
End for
End while
End

```

Figure 1. Pseudo code of enhanced colliding bodies optimization [21]

4. NUMERICAL EXAMPLE

In this section, three examples are studied. The first example is a quadrangular FE mesh with 1936 nodes (44×44). The second and third examples are rectangular and H-shaped forms of Kaveh and Mahdavi [16]. A weighted incidence graph is used to transform the connectivity properties of finite element models into those of graphs. In all of these examples the weights of all the nodes and edges are taken as unity. In the second stage after establishing adjacency matrix of the graph, the graph is partitioned into p subdomains by use of the p median concept and metaheuristic algorithms. Three optimization algorithms, CBO, ECBO and PSO are applied for decomposing the meshes by p medians and the results are compared in Table 1.

Example 1: A quadrangular FE mesh with $44 \times 44 = 1936$ nodes and its decomposition into 5-10-20 subdomains are shown in Fig. 2. The comparisons of convergence rates for the three algorithms for each instance are made in Table 1 and Fig. 3.

Example 2: A rectangular FE mesh with 760 nodes and four internal perforations is shown Fig. 4. The comparisons of convergence rates for the three algorithms for each instance are made in Table 1 and Fig. 5.

Example 3: A H-shaped FE mesh is considered as shown in Fig. 6, and decomposed into 5–10 subdomains with medians. The comparisons of convergence rates for the three algorithms for each instance are made in Table 1 and Fig. 7.

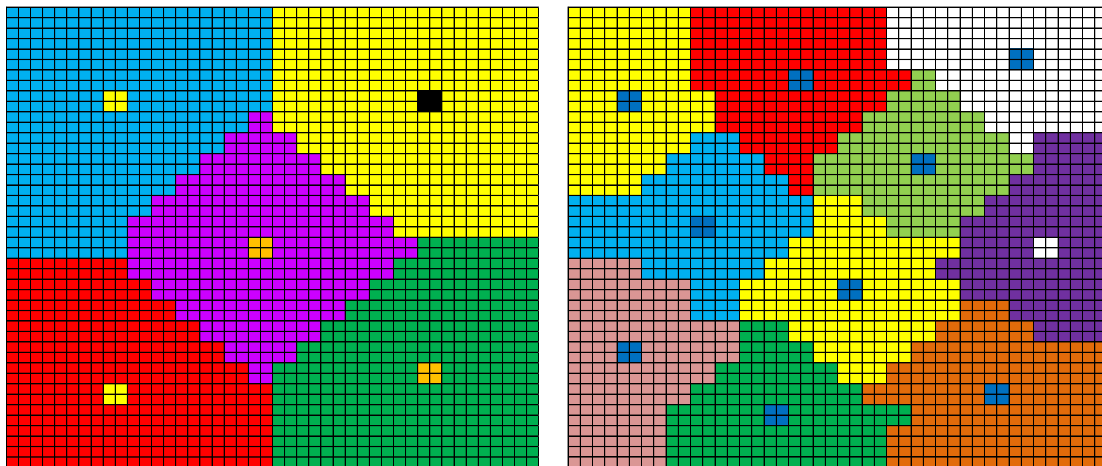


Figure 2. A quadrangular mesh divided into 5 and 10 subdomains by the ECBO algorithm

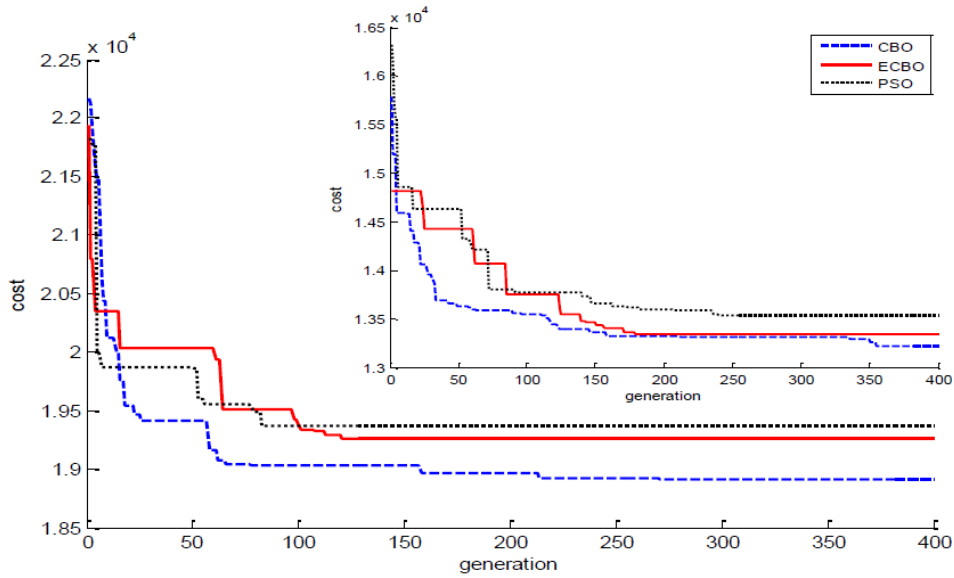


Figure 3. The history of convergence for $p = 5$ and $p=10$ in a quadrangular mesh

Table 1: The minimum cost and CPU time for the considered numerical examples

Number of medians		CBO		ECBO		PSO	
		min cost	CPU time(s)	min cost	CPU time(s)	min cost	CPU time(s)
Example 1	$p=5$	19048	0.86639	18912	0.79748	19423	0.98038
	$p=10$	13344	1.09393	13216	1.230409	13872	1.6339
	$p=20$	9368	2.9727	9232	3.1651	9448	6.2567
Example 2	$p=5$	3711	0.41211	3623	0.53425	3960	3.8188.
	$p=10$	2680	1.26562	2575	1.38088	2744	4.498625
Example 3	$p=5$	4374	1.201909	4114	2.187340	4224	2.568828
	$p=10$	3002	2.691113	2930	2.758156	3076	2.275321

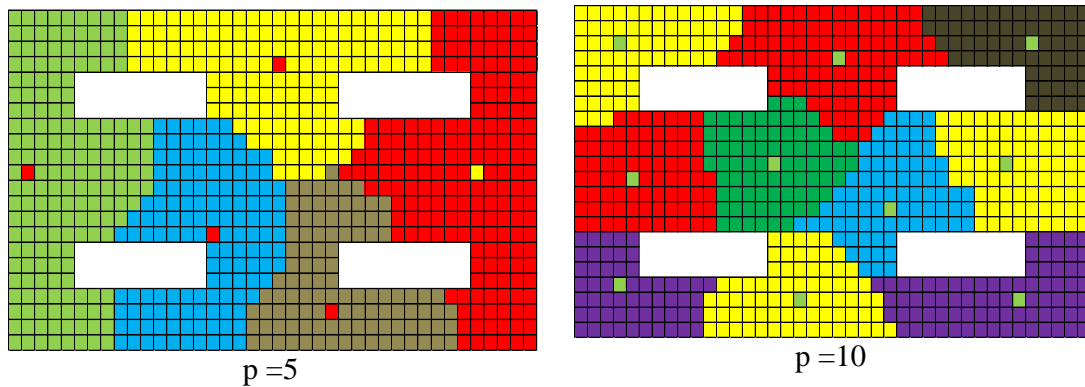


Figure 4. A rectangular mesh divided into p subdomains by the ECBO algorithm

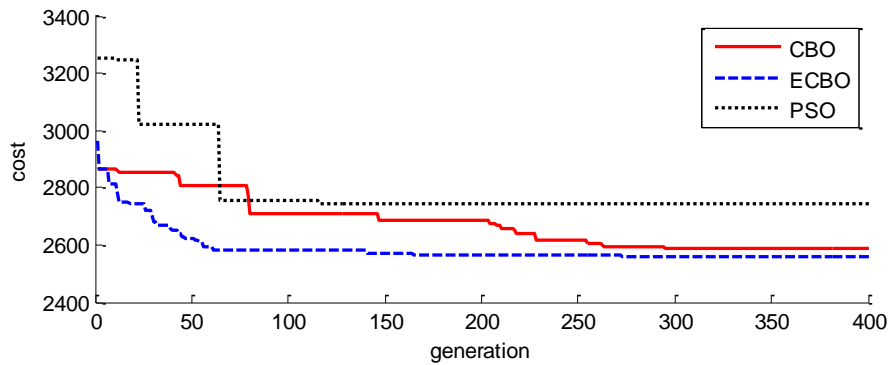


Figure 5. The history of the convergence for $p = 10$ in a rectangular mesh with four perforations

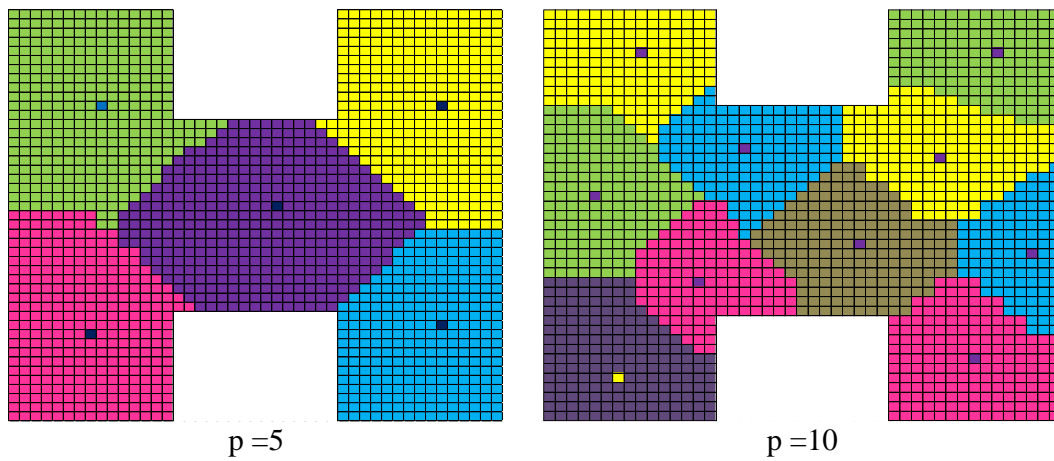


Figure 6. The H-shaped mesh divided into p subdomains by the ECBO

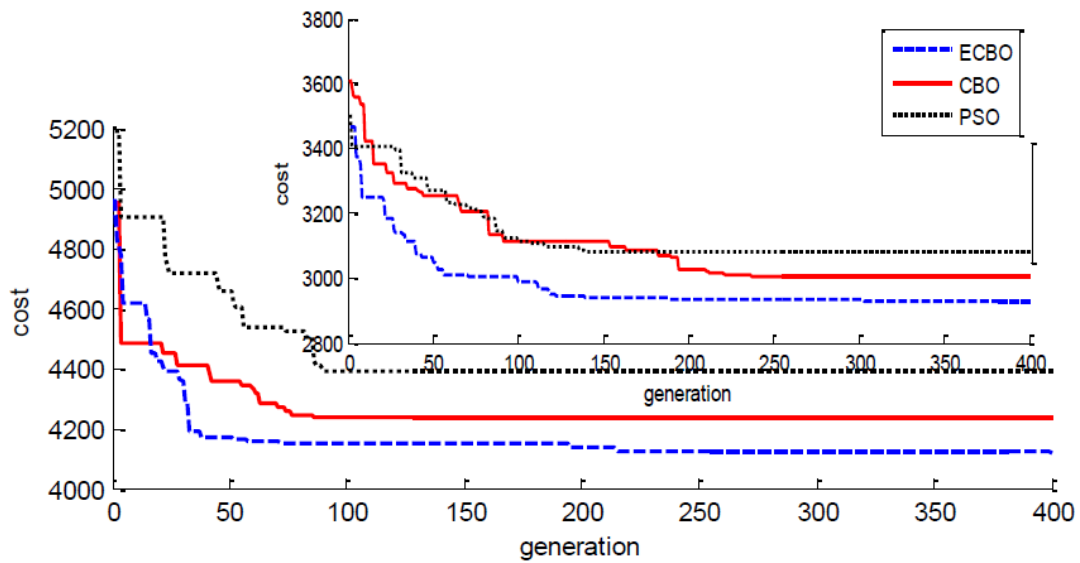


Figure 7. The history of convergence for $p = 5$ and $p = 10$ for the H-shaped mesh

5. DISCUSSION AND CONCLUSIONS

In this study the CBO and ECBO algorithms are applied to finding medians of different finite element models. Though the CBO has been successfully implemented in partitioning and the speed of convergence is better than ECBO (Fig. 8), however, the reliability of the ECBO in min cost and solution accuracy is preferable (see Fig. 3, Fig. 5 and Fig. 7). By ECBO, more runs have a similar answers and this shows a better convergence around near optimal solution within a reasonable time. This confirms that the memory of ECBO can help the CBO to escape from local minima

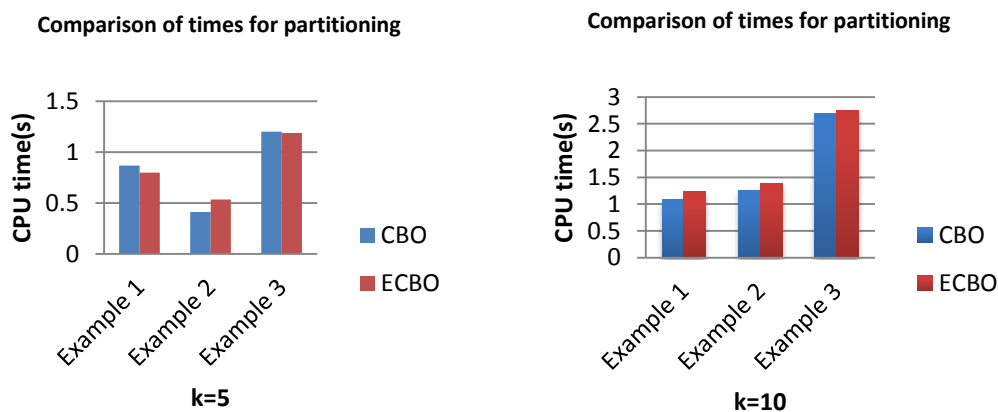


Figure 8. Comparison of the computational time for the CBO and ECBO

REFERENCES

1. Gyamera M. Optimal location of an additional hospital- Sekyedumase District, A thesis of Master of Science, Kwame Nkrumah University of Science and Technology, 2013.
2. Dantrakul S, Likasiri C, Pongvuthithum R. Applied p-median and p-center algorithms for facility location problems, *Expert Syst Appl* 2014; **41**(8): 3596-604.
3. ReVelle CS, Swain RW. Central facilities locations, *Geograph Anal* 1970; **2**(1): 30-42.
4. Hakimi SL. Optimum locations of switching centers and the absolute centers and medians of a graph, *Oper Res* 1964; **12**(3): 450-9
5. Kariv O, Hakimi SL. An algorithmic approach to network location problems. II. The p-medians, *SIAM J Appl Math* 1979; **37**(3): 539-60.
6. Sevkli M, Mamedsaidov R, Camci F. A novel discrete particle swarm optimization for p-median problem, *J King Saud Univer, Eng Sci* 2014; **26**: 11-9.
7. Sheikholeslami R, Kaveh A. A survey of chaos embedded meta-heuristic algorithms, *Int J Optim Civil Eng* 2013; **3**(4): 617-33.
8. Kirkpatrick S, Gelatt C, Vecchi M. Optimization by simulated annealing, *Science* 1983; **220**: 671-80.
9. Glover F. Tabu Search - Part I, *ORSA J Comput* 1989; **1**(3): 190-206.

10. Goncharov E, Kochetov Y. Probabilistic tabu search for the unconstrained discrete optimization problems, *Discr Anal Oper Res* 2008; **9**(2): 13-30 (in Russian).
11. Alp O, Erkut E, and Drezner D. An efficient genetic algorithm for the p-median problem, *Ann Oper Res* 2003; **122**: 21-42.
12. Levanova T, Loresh MA. Algorithms of Ant System and Simulated Annealing for the p-median Problem Automation and Remote Control, 2004: **65**: 431-8.
13. Kaveh A, Sharafi P. Ant colony optimization for finding medians of weighted graphs, *Eng Comput* 2008; **25**(2): 102-20.
14. Kaveh A, Rahimi Bondarabady HA. A hybrid graph-genetic method for domain decomposition, *Civil Comp Press*, Leuvan, Paper 2.8 from CCP: 64, ISBN 0-948749-66-0 (2000).
15. Kaveh A, Shojaee S. Optimal domain decomposition via p-median methodology using ACO and hybrid ACGA, *Finite Elem Anal Des* 2008; **44**(8): 505-12.
16. Kaveh A, Mahdavi VR. Optimal Domain Decomposition using Colliding Bodies Optimization and k-median method, *Finite Elem Anal Des* 2015; **98**: 41-9.
17. Kaveh A, Ghobadi M. A multi-stage algorithm for blood banking supply chain allocation problem, *Int J Civil Eng*, Revised, 2016.
18. Boussaïd I, Lepagnot J, Siarry P. A survey on optimization metaheuristics, *Inform Sci* 2013; **238**: 82-117.
19. Kaveh A, Mahdavi VR. Colliding bodies optimization method for optimum design of truss structures with continuous variables, *Adv Eng Softw* 2014; **70**: 1-12.
20. Kaveh A, Ilchi Ghazaan M. Enhanced colliding bodies optimization for design problems with continuous and discrete variables, *Adv Eng Softw* 2014; **77**: 66-75.
21. Kaveh A, Ilchi Ghazaan M. A comparative study of CBO and ECBO for optimal design of skeletal structures, *Comput Struct* 2015; **153**: 137-47.
22. Kaveh A. *Advances in Metaheuristic Algorithms for Optimal Design of Structures*, Springer International Publishing, Switzerland; 2014.